

Recommendations for Lotus Domino 7.0.x configuration in conjunction with SPAMfighter SMTP Anti Spam Server

Avoid creation of an open relay!

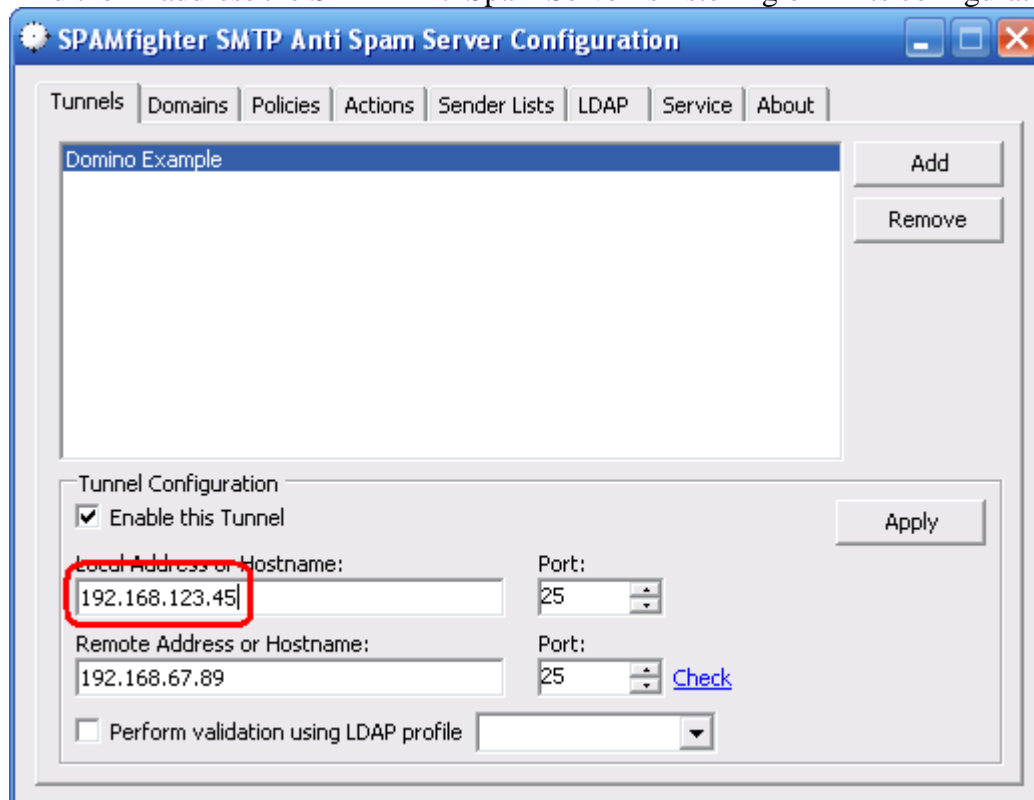
Why is this important?

By default, Lotus Domino 7.0.x servers accept and deliver mail to external internet hosts (“relay”) from any IP address in the local subnet.

When you install SMTP Anti Spam Server, it appears to Domino as just another mail client (MTA) in the local subnet. However it acts on behalf of external hosts, some of which are possibly spammers who will abuse this security hole. The consequences of having an open relay are severe and can result in massive bandwidth abuse as well as blacklisting of your mail server.

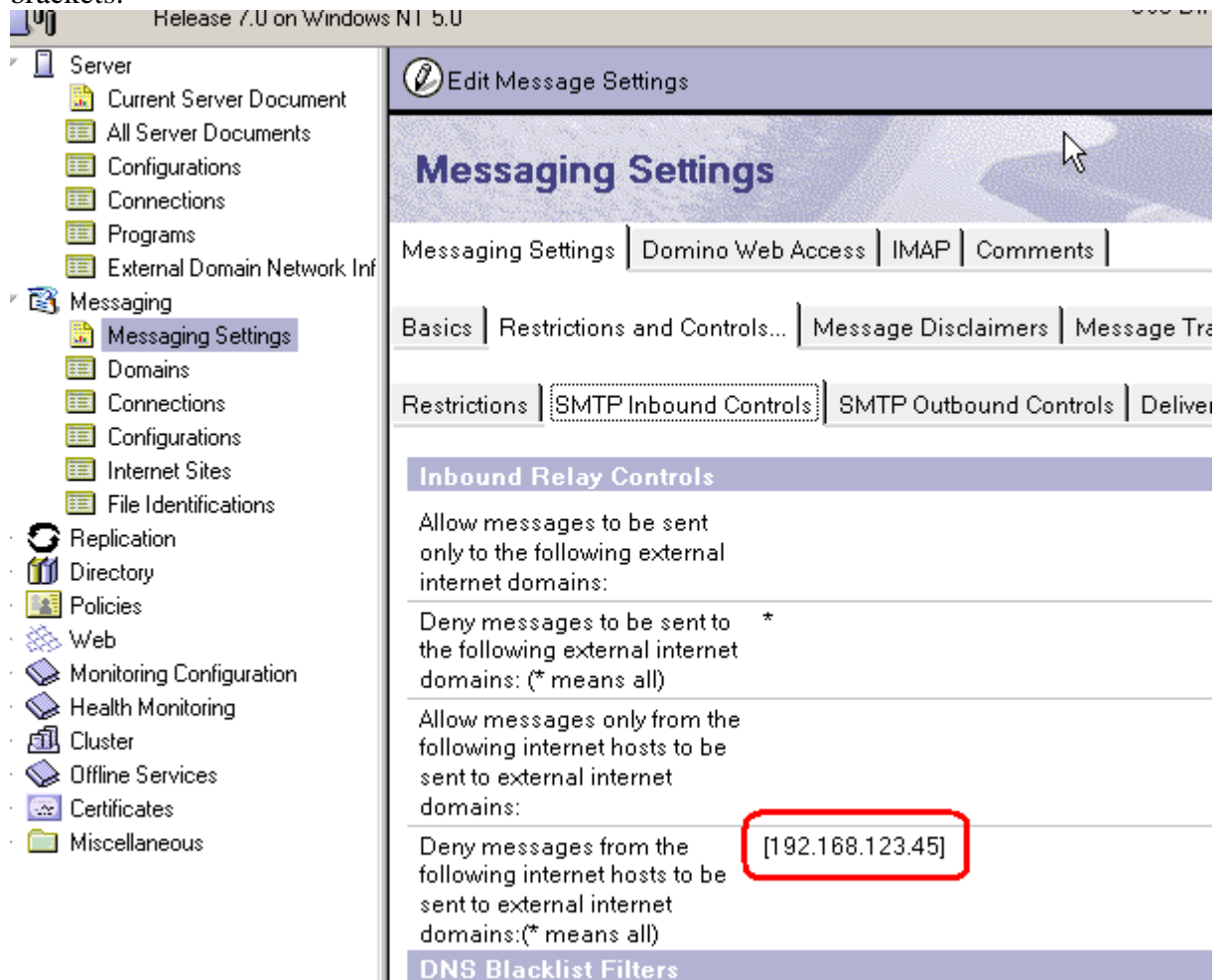
Best configuration practice

- 1) Find the IP address the SMTP Anti Spam Server is listening on in its configuration utility:



- 2) Start the Domino Administrator and connect to the server.
- 3) Click on “Configuration” at the top followed by “Messaging” > “Messaging Settings” in the pane on the left.
- 4) On the right side, choose “Messaging Settings” > “Restrictions and Controls...” > “SMTP Inbound Controls”.
- 5) Double-click the input field next to “Deny messages from the following internet hosts to be sent to external internet domains:” and add the IP address you noted earlier, in angle

brackets:



6) Finally, click “Save & Close” at the top to save the new setting.

Disable “catch-all”

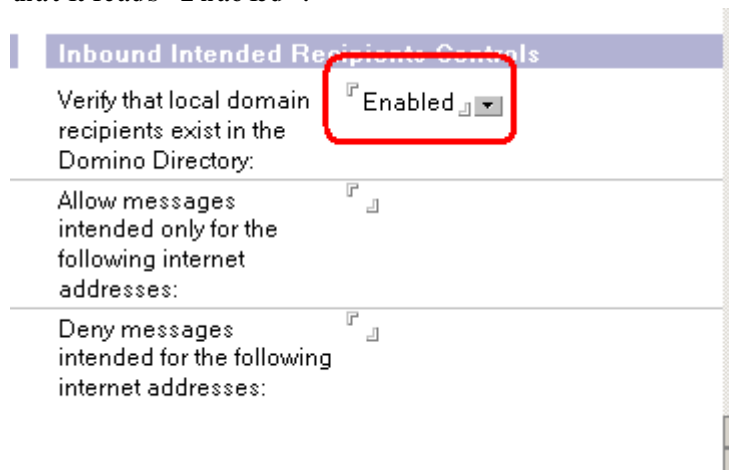
Why is this important?

By default, Lotus Domino 7.0.x servers accept mails for any possible e-mail address under the domains it is configured to receive mail for, whether such a mailbox actually exists or not. While this feature enables the system administrator to receive mail to misspelled recipients, 99% of mails to invalid addresses tend to be spam, leading to a tremendous increase in unsolicited mails.

Best configuration practice

- 1) Start the Domino Administrator and connect to the server.
- 2) Click on “Configuration” at the top followed by “Messaging” > “Messaging Settings” in the pane on the left.
- 3) On the right side, choose “Messaging Settings” > “Restrictions and Controls...” > “SMTP Inbound Controls”.
- 4) Scroll down to “Inbound Intended Recipients Controls” and double-click the value right next to the setting “Verify that local domain recipients exist in the Domino Directory”, so

that it reads “Enabled”:



5) Finally, click “Save & Close” at the top to save the new setting.